



WEDNESDAY EVENING SERIES

5th APRIL TO 6th SEPTEMBER 2017

SAILING INSTRUCTIONS

QUEEN MARY SAILING CLUB

WEDNESDAY EVENING SERIES 2017

SAILING INSTRUCTIONS

1. RULES

- 1.1. The regatta will be governed by the rules as defined in *The Racing Rules of Sailing 2017 - 2020*.
- 1.2. Not used.
- 1.3. The bye-laws of Queen Mary Sailing Club will apply.
- 1.4. The Exoneration Penalty and the Advisory Hearing and RYA Arbitration of the RYA Rules Disputes Procedures will be available as detailed in the RYA Racing Rules Guidance Booklet, December 2015. The Exoneration Penalty shall be 30% of the number of boats starting the race or 3 places, whichever is greater.

2. NOTICE TO COMPETITORS

Notices to competitors will be posted on the Official Noticeboard located in the corridor on the lower deck of the clubhouse.

3. CHANGES TO SAILING INSTRUCTIONS

Any change to the Sailing Instructions will be posted not less than 30 minutes before the scheduled warning signal of any race affected. Any change to the schedule of the races will be posted by 18:00 hrs on the Wednesday before it will take effect.

4. SIGNALS MADE ASHORE

- 4.1. Signals made ashore will be displayed on the Clubhouse flagpole.
- 4.2. When flag AP is displayed ashore, "1 minute" is replaced with "not less than 30 minutes" in race signal AP. This changes the meaning of flag AP in Race Signals.
- 4.3. Adequate personal flotation devices shall be worn by all crew members at all times when afloat and flag Y will not be shown. This changes rule 40. Failure to comply with this requirement will result in disqualification without a hearing. This changes rule 63.1.

5. SCHEDULE OF RACES

Dates of racing: From Wednesday 5th April until Wednesday 6th September there will be one fixed-time race every Wednesday evening.

WARNING SIGNAL	CLASSES	CLASS WARNING FLAG
18:55	Handicap	"H"

6. CLASS FLAGS

Class flags will be as set out above.

7. RACING

The racing area will be indicated on the Daily Information Board located in the stairwell on the lower deck.

8. THE COURSE

- 8.1. The course designations and configurations, including the order of rounding marks, are shown in Appendix 1. The courses will be used in rotation, week by week, as follows: courses K, L, N and P.
- 8.2. The letter designating the course to be sailed for each race will be displayed on the race committee boat before or with the warning signal and will remain displayed until the starting signal.
- 8.3. The start/finish line shall not be crossed on downwind legs on which it is an obstruction.

9. MARKS

- 9.1. Mark 1 of the designated course will fly a yellow flag. Mark 2 will fly a green flag, mark 3 a blue flag and mark 4 a pink flag.
- 9.2. The starting and finishing mark will be a spherical buoy flying a red flag.

10. AREAS THAT ARE OBSTRUCTIONS

The following areas are obstructions and boats shall not sail in those areas at any time:

- (a) at the recovery plant on the western wall of the reservoir, the area bounded by the dredger's anchor buoys;
- (b) at the southern end of the bund, the area bounded by the dredger's anchor buoys and the shallows bounded by yellow topped black buoys.

11. THE START

- 11.1. Races will be started by using rule 26 with the warning signal made 5 minutes before the starting signal.
- 11.2. The starting line will be between a staff displaying an orange flag on the race committee boat at the starboard end and the port end starting mark.
- 11.3. A boat starting later than 15 minutes after her starting signal will be scored Did Not Start. This changes rules 35 and A4.1

12. CHANGING THE NEXT LEG OF THE COURSE

Course marks may be moved by no more than 150 metres during the race but flag C will not be displayed nor will information regarding the change be displayed. This changes rule 33.

13. THE FINISH

- 13.1 The finishing line will be between a staff displaying a blue flag on the race committee boat and the nearby finishing mark.
- 13.2 Boats will finish the first time that they cross the finishing line during the finishing period. The commencement of the finishing period will be signalled by the display of a blue flag on the staff of the race committee boat with a sound signal. The finishing period will continue for 30 minutes after the first boat has finished. This period may be extended at the discretion of the Race Officer.

14. PENALTY SYSTEM

For Multi-hull classes, the Two-Turns Penalty is replaced by the One-Turn Penalty. This changes rule 44.1

15. NOT USED

16. PROTESTS AND REQUESTS FOR REDRESS

- 16.1. Protests shall be written on forms available from the race office and shall be delivered there within 60 minutes of the last boat's finishing time.
- 16.2. Protests will be heard in approximately the order of receipt as soon as possible.

17. SCORING

- 17.1.1 Boat's scores will be based on their corrected average lap-time with lesser times being given higher places.
- 17.1.2 A boat's average lap-time will be her elapsed time divided by the number of laps completed.
- 17.1.3 Corrected times will be calculated by the Portsmouth Yardstick system using Queen Mary handicap numbers displayed on the official notice board.
- 17.1.4 Queen Mary handicap numbers will not be adjusted for the duration of the series.
- 17.2 Appendix 9 "Race Scores in a Series longer than a Regatta" will apply.
- 17.3. 4 races are required to be completed to constitute a series.

- 17.4 An entrant must complete 33% (rounded up) of the races constituting the series to qualify for a position and prize.
- 17.5. (a) When fewer than 4 races have been completed, a boat's series score will be the total of her race scores.
(b) When from 5 to 8 races have been completed, a boat's series score will be the total of her best four race scores.
(c) When 9 or more races have been completed, a boat's series score will be the total of the best 50% (rounded up) of her race scores.

18. SAFETY REGULATIONS

- 18.1. Each boat shall sign on each day that she intends to race before going afloat.
- 18.2. A boat that launches and does not start a race, retires from a race or receives outside help during a race shall complete a declaration at the Race Office within the protest time limit.

19. RADIO COMMUNICATIONS

Except in an emergency a boat that is racing shall not make voice or data transmissions and shall not receive voice and data communications not available to all boats.

20. PRIZES

Prizes will be awarded to the ten highest placed qualifying boats. In addition, prizes will be awarded to the first qualifying Lady Helm and first qualifying Junior crew. Additional prizes may also be awarded.

21. RISK STATEMENT

Rule 4 of the Racing Rules of Sailing states: "The responsibility for a boat's decision to participate in a race or to continue racing is hers alone".

Sailing is by its nature an unpredictable sport and therefore inherently involves an element of risk. By taking part in the event, each competitor agrees and acknowledges that:

- (a) They are aware of the inherent element of risk involved in the sport and accept responsibility for the exposure of themselves, their crew and their boat to such inherent risk whilst taking part in the event;
- (b) They are responsible for the safety of themselves, their crew, their boat and their other property whether afloat or ashore;
- (c) They accept responsibility for any injury, damage or loss to the extent caused by their own actions or omissions;
- (d) Their boat is in good order, equipped to sail in the event and they are fit to participate;
- (e) The provision of a race management team, patrol boats and other officials and volunteers by the event organiser does not relieve them of their own responsibilities;
- (f) The provision of patrol boat cover is limited to such assistance, particularly in extreme weather conditions, as can be practically provided in the circumstances;
- (g) It is their responsibility to familiarise themselves with any risks specific to this venue or this event drawn to their attention in any rules or information produced for the venue or event and attend any safety briefing held for the event.

22. INSURANCE

Each participating boat shall hold adequate insurance and in particular to hold insurance against third party claims in the sum of at least £2 million.

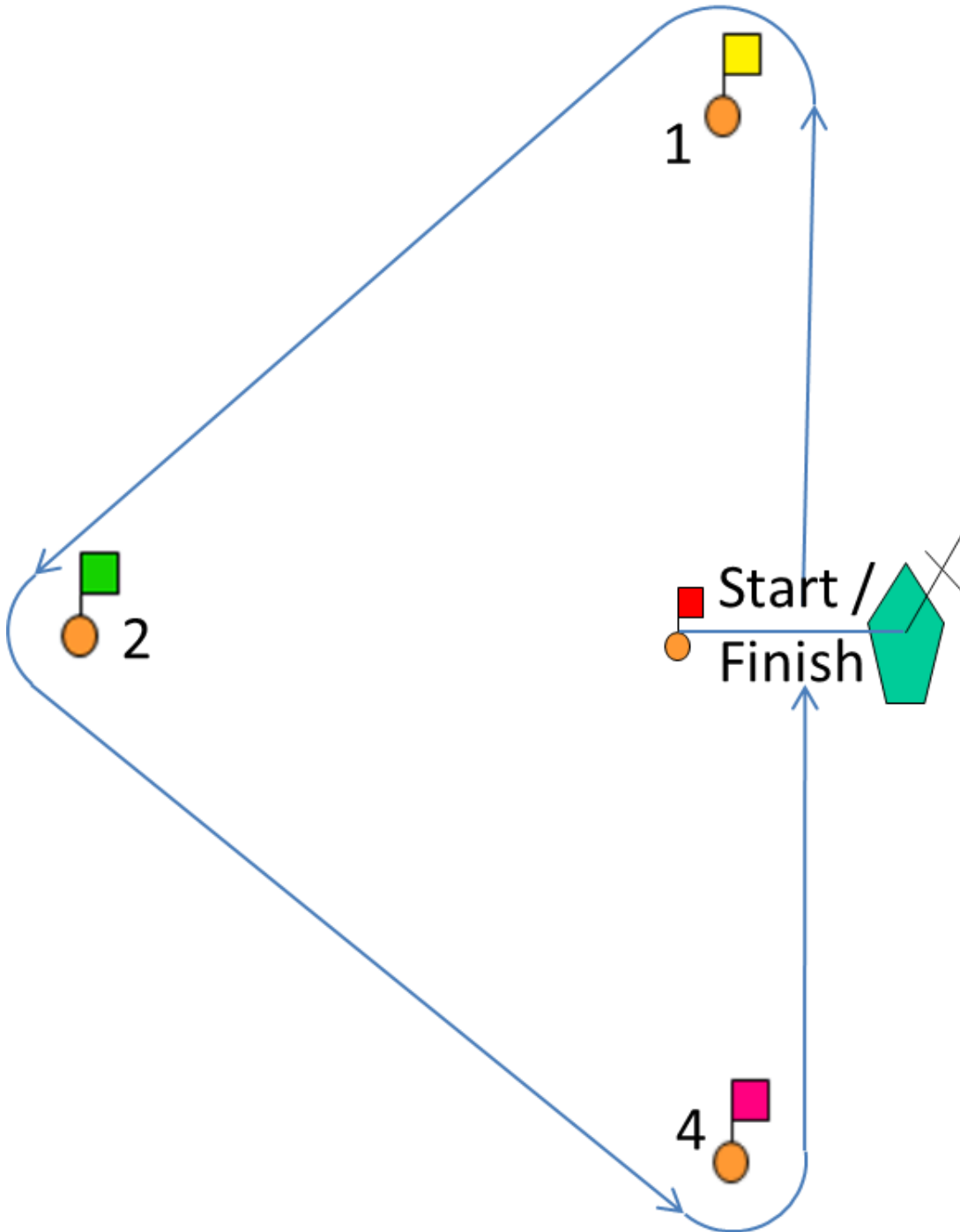
23. LOCAL RULES (derived from the Bye-laws of Queen Mary Sailing Club)

- 23.1 **Buoyancy:** Each boat shall be fully equipped with sufficient buoyancy to enable it to float and to support its crew if capsized or holed. Personal flotation devices shall be worn by all crew members at all times whilst afloat, on the pontoons or on the sloping banks. Flag Y will not be flown. Failure to comply with this regulation will result in disqualification without a hearing. This changes the preamble to Part 4 of the Racing Rules of sailing and rules 40, 63.1 and A5.
- 23.2 **Protective clothing:** Between 1st November and 31st March, full body wetsuits or dry-suits shall be worn by all competitors at all time whilst afloat. These do not constitute a personal flotation device.
- 23.3 **Keeping Clear:** Boats shall keep clear of barges and motor vessels that are restricted in their ability to manoeuvre. When a boat finds herself unable to keep clear of such a vessel she may use propulsion, such as paddling or rocking, provided she does not gain a significant advantage in the race (rule 42.3(h)).
- 23.4 **Parking:** Boats associated with cars parked on the upper (clubhouse) level during a race may be disqualified from that race without a hearing. This changes 63.1 and A5.
- 23.5 **Invasive Species:** In accordance with Environment Agency guidelines and to prevent the spread of invasive species, QMSC is adhering to the CHECK CLEAN DRY principle. Details are at www.queenmary.org.uk/Data/Sites/1/check-clean-dry-poster.pdf Please make sure your boat has been clean and dry for 2 days prior to your arrival and is washed and dried before returning to other venues.

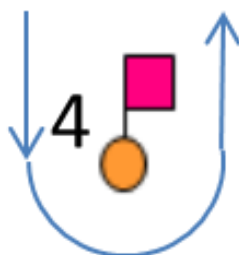
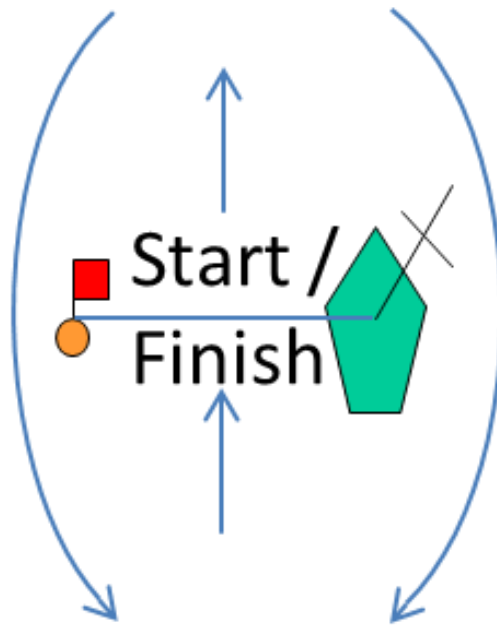
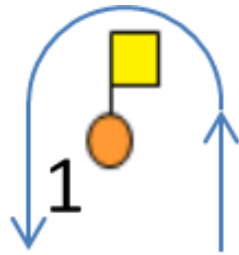
Appendix 1 – Courses to be sailed

Course K

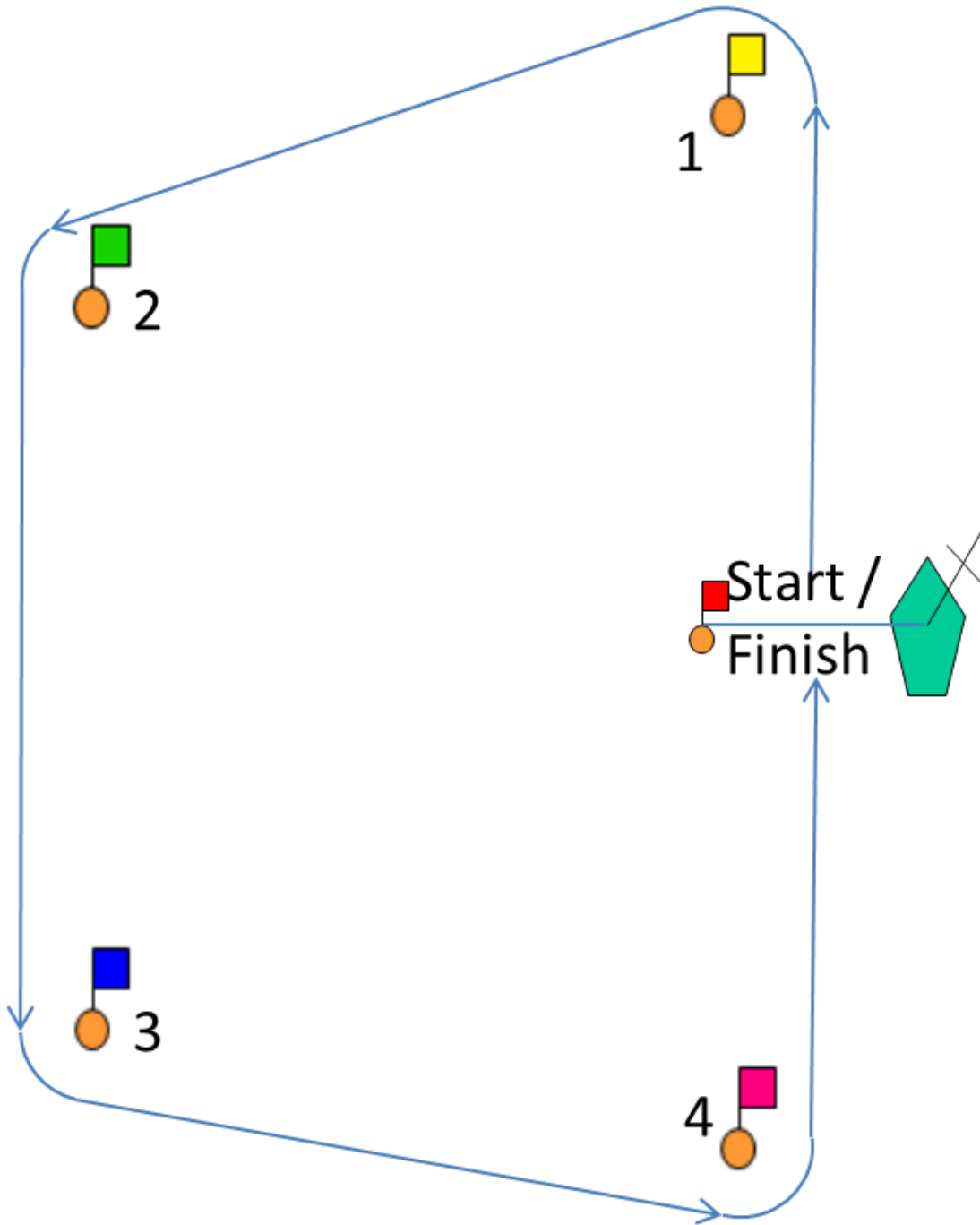
1p, 2p, 4p, Start/Finish is one round



Course L
1p, 4p, Start/Finish is one round



Course N
1p, 2p, 3p, 4p, Start/Finish is one round



Course P
1p, 2p, 3s, 4p, Start/Finish is one round

